

# TRANSPORTATION ENGINEERING

**MAY 2009 – JANUARY 2010**

**CONSTRUCTION COST:**

N/A

**KEY PROJECT STAFF:**

**MINAL HAHM, PE, CFM**

PROJECT MANAGER

**ANDY WELLS, EIT**

PROJECT ENGINEER

**JARED SIMON, EIT**

STAFF ENGINEER

**PRIME:**

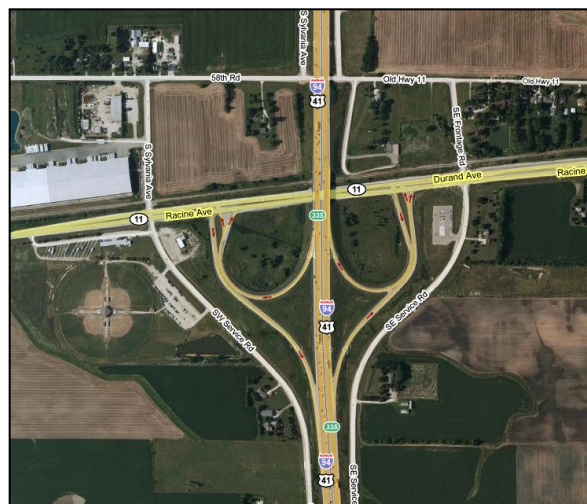
SEDW (SE Design Works, LLC)

**CONTACT:**

Joshua Mount  
518 W Cherry Street  
Milwaukee, WI 53212  
(414) 225-9817  
Joshua.Mount  
@daarengineering.com

**SERVICES & SOLUTIONS**

- Stormwater Report
- Storm Sewer Design
- Hydrologic Analysis
- Hydraulic Analysis
- WisDOT Approvals
- Transportation Drainage Design



## **I-94 N-S CORRIDOR – SEGMENTS 12 & 13** **RACINE COUNTY, WI**

M Squared Engineering (**M<sup>2</sup>**) has teamed with SE Design Works, LLC (SEDW) – a joint venture of DAAR Engineering and EMCS, for this Wisconsin Department of Transportation (WisDOT) project in southeastern Wisconsin. **M<sup>2</sup>** provided the stormwater management and drainage design along the I-94 corridor through Racine for Segment 12 (KR Interchange to STH 11 Interchange gap) and Segment 13 (STH 11 Interchange). Our comprehensive drainage design facilitated PS&E deliverables including the complex culvert analysis, storm sewer system design, inlet capacity, and water quality analysis of the final design. Project complexities included accommodating a complex drain tile system with numerous unknown variables and adjacent cemetery encroachments for deep trenching.

The project required coordination with the southeastern freeways and the frontage road design teams. Water quality treatment was also incorporated into the drainage and storm water management design by means of strategically locating drainage swales and ditches.



**M SQUARED ENGINEERING, LLC**  
*...where engineering solutions meet water quality...*