

TRANSPORTATION ENGINEERING

MAY 2008 – JUNE 2009

CONSTRUCTION COST:

N/A

KEY PROJECT STAFF:

MINAL HAHM, PE, CFM

PROJECT MANAGER

MATT HAHM, PE

PROJECT ENGINEER

ANDY WELLS, EIT

STAFF ENGINEER

PRIME:

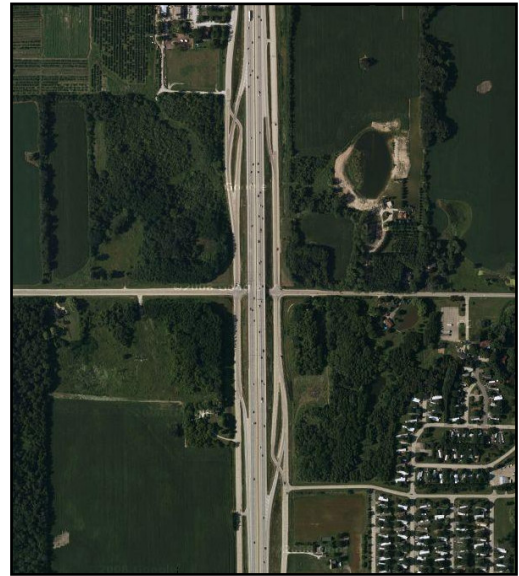
DAAR Engineering

CONTACT:

Joshua Mount
518 W Cherry Street
Milwaukee, WI 53212
(414) 225-9817
Joshua.Mount
@daarengineering.com

SERVICES & SOLUTIONS

- Stormwater Detention Basin Designs
- Stormwater Report
- Storm Sewer Design
- Hydrologic Analysis
- Hydraulic Analysis
- WisDOT Approvals



CTH KR & I-94 INTERCHANGE

RACINE & KENOSHA COUNTIES, WI

M Squared Engineering (**M²**) has teamed with DAAR Engineering for this Wisconsin Department of Transportation (WisDOT) project in southeastern Wisconsin. **M²** provided the stormwater management and drainage design along the I-94 corridor at the County Highway KR Interchange. Our hydrologic and hydraulics analysis facilitated deliverables including the design and review of two stormwater detention basins, a complete system of culverts conveying a navigable stream, and a storm sewer system.

The project required coordination with the southeastern freeways design team and the frontage road design team, while maintaining compliance with WisDOT's drainage design criteria. A detailed stormwater report was developed using FEMA maps and models, as well as existing hydrology, hydraulics, and storm sewer information from the site survey. Water quality treatment was also incorporated into the drainage and storm water management design by means of strategically locating drainage swales and ditches in conjunction with a wet-bottom pond.



M SQUARED ENGINEERING, LLC

...where engineering solutions meet water quality...