

WATER RESOURCES

JUNE 2007 TO PRESENT

KEY PROJECT STAFF:

MATT HAHM, PE
PROJECT MANAGER

MINAL HAHM, PE, CFM
PROJECT ENGINEER

ANDY WELLS, EIT
STAFF ENGINEER

CLIENT:

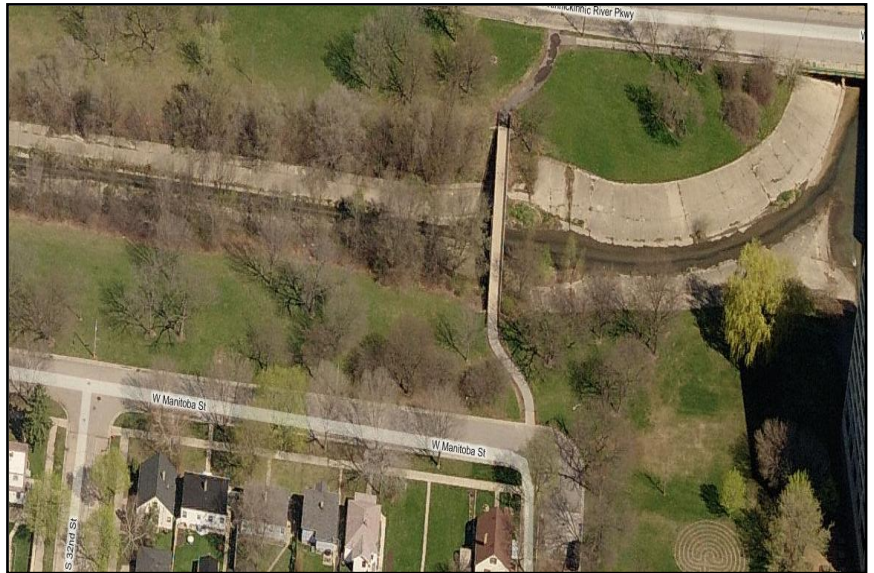
MMSD / Hey and Associates

CONTACT:

Gary Rausch

SERVICES & SOLUTIONS

- Hydrologic & Hydraulic Analyses
- Alternative Analysis
- Channel Rehabilitation Alternatives
- Flow Reduction



KINNICKINNIC RIVER CHANNEL REHABILITATION, *MMSD*

The Kinnickinnic River is the most urbanized watershed and channelized stream system in Milwaukee County. The 25-square mile watershed is completely urbanized. The concrete channel conveys the one-percent probability flood without causing significant flood damages through the project area from South 27th Street to Chase Avenue.

The project objective includes improving public safety, managing long-term flood risk, providing in-stream aquatic habitat, improving aesthetics of channel, and leveraging additional community objectives.

Alternative channel rehabilitation plans were developed for the project area based on combinations of the following techniques to mitigate the adverse affects of removing the concrete lining.

- Upstream storage to reduce peak flood flows
- Diversion of high flows
- Modify bridges
- Remove drop structures
- Widen channel
- Widen and deepen channel

The preliminary channel rehabilitation design focused on a general channel shape to define the overall cross section needed to convey the peak design flow.



M SQUARED ENGINEERING, LLC
...where engineering solutions meet water quality...